



JULY 2024



# CAPITAL, ESTATES, CLIMATE & SUSTAINABILITY



***lmetb***

*Bord Oideachais agus  
Oiliúna Lú agus na Mí*  
Louth and Meath Education  
and Training Board





# CONTENTS



A Word of Welcome	4	Further Education Campus Navan	32
Overview of LMETB	8	Schools on Site	34
LMETB Organisational Chart	10	Schools in Design	40
Economic Impact	11	Projects Completed	52
Land and Buildings Department	12	Making a Difference	60
Modern Methods of Construction	14	Climate & Sustainability	70
Dunboyne College of the Future	16	Estates Management	73
Spotlight on Drogheda	18	Current Building Projects	80
		Acknowledgements	86





Advanced Manufacturing Training Centre of Excellence, Dundalk

## A WORD OF WELCOME

I am very conscious that LMETB is centrally located on the Dublin Belfast economic corridor. It is anticipated that 20% of the population will reside here and produce up to 40% of GDP. Our growth is greatly contributed to by significant housing developments in towns such as Trim, Dunboyne, Ashbourne, Drogheda and Navan – all of which are within the Dublin commuter belt. Drogheda has recently been identified by the CSO as the fastest growing town in Ireland, population 44,137, and is one of two major towns in Co. Louth with Dundalk having a population of 45,112.

It is within this context that I lead the Land and Buildings team and in doing so due cognisance has to be had to the historic development of education within counties Louth and Meath. Since aggregation and the formation of LMETB huge strides have been made in coordinating service provision and making best use of existing facilities together with the development of new facilities, more on that later. Our work is informed by climate action, sustainability, demographics and the changing landscape we operate within.

To address current and future needs within an education and training setting requires a robust response from the Land and Buildings Department.

The past 18 months has seen an increase in capital spend from €23m to €56m. New buildings, extensions and upgrades - all amounting to over €400m are being delivered across Louth and Meath.

Not only is the content of our courses excellent, but our facilities are designed to be conducive to learning and self-improvement – it makes us so proud in the Land and Buildings Department to play our part in so many people's personal development throughout Louth and Meath.

Our success has been achieved under the leadership and vision of our CE, Martin G. O'Brien; with the support and assistance of the Department of Education, the Department of Further and Higher Education, Research, Innovation and Science, SOLAS, Meath County Council and Louth County Council; and through the combined talents, willingness and hard work of everyone in LMETB – particularly the team in Land and Buildings.

We strive to deliver the optimum facilities on time, on budget and with a design flair that responds to the expectations of the people of Louth and Meath. The next 18 months will be exciting and I look forward to sharing what will be achieved with everyone.

**Sinéad Murphy**  
Assistant Principal Officer  
Head of Land and Buildings







Martin G. O'Brien, Chief Executive LMETB

**“excellence and innovation in the education and training of learners through the provision of dynamic services delivered by professional staff.”**

LMETB has one key raison d'être – the delivery of excellence in education and training. This is set out in our Strategy Statement 2022-26 where our mission statement commits LMETB to **“excellence and innovation in the education and training of learners through the provision of dynamic services delivered by professional staff.”** The strategy statement also sets out LMETB's core values and principles which, in an LMETB context commits us to excellence which is defined as all stakeholders being afforded the highest standards of service provision.

With regard to the built environment the strategy statement specifically commits LMETB to actions to “continue to develop and maintain the built environment to support LMETB's strategic goals” and to “ensure that LMETB property is managed in a sustainable manner in line with LMETB's Sustainability Policy”.

To deliver on the mission and strategic goals of LMETB it is essential that we understand what is required to support the provision of high-quality education and training and improve the learning experience to meet the needs of all learners. To do this LMETB takes a skills and innovation focus to deepening collaboration on an all island and East West basis, within the EU and beyond, so as to support the positioning of Ireland as a leading knowledge economy and so equip Ireland to compete on the world stage.

LMETB knows that collaboration with educational institutions, employers and others to identify the talents and skills required and to provide education and training solutions in response to same is the key to staying relevant.

I want to acknowledge the work of the leadership and staff of the three directorates whose efforts have turned and continue to turn, those aspirations to excellence and innovation into a reality for the citizens of, not just Louth and Meath, but the island as a whole. We enrolled 14,573 students at primary and post primary level in 2023 and look forward to growing those numbers in 2024.

There were a further 37,140 beneficiaries of FET programmes in 2023 across full time, part time and other service areas. An additional 9,353 young people participated in Music Generation programmes offered by Louth and Meath Music Education Partnerships.

I want to thank our Lands and Buildings Department, under the leadership of Ms. Sinéad Murphy APO, which has worked tirelessly, efficiently and with great purpose to enable LMETB meet its climate and sustainability targets, to provide new buildings, extensions and upgraded facilities across Louth and Meath. This work enables LMETB deliver in line with our strategic vision. A sample of these projects are highlighted throughout this publication.



3D Concrete Printed House, Drogheda





## AN OVERVIEW OF LMETB

### OVERVIEW OF LMETB 2024

- ¼ billion budget
- €60million capital budget
- 3,010 staff
- 37,140 students
- 15,450 Further Education Learners (Level 1-6)
- 3171 PLC Learners
- 1657 Apprenticeships

### LAND AND BUILDINGS OVERVIEW

- €400million – current est. ongoing projects
- 82 ongoing projects – various sizes
- €56million expended in 2023
- €60million projected expenditure 2024
- 8 school projects ongoing for other patrons
- 9 staff

### MAJOR DEVOLVED PROJECTS

- Advanced Manufacturing Training Centre of Excellence, Dundalk
- Dunboyne College of the Future
- New Administrative Headquarters Building, Drogheda
- Deep Energy Retrofit of Coláiste Pobail Ráth Chairn
- O'Carolan College, Nobber – New School
- Coláiste na Mí & St. Mary's Special School, Navan – New School Campus
- Bush Post Primary School, Carlingford – Major Devolved Extension
- St. Peter's National School, Dunboyne – New School
- Ard Rí Community National School & St. Ultan's Special School, Navan – New School Campus
- Dunshaughlin Community College - Major Devolved Extension
- 7 Additional Accommodation Permanent Extensions
- 7 Major Extensions to non-ETB schools
- 2 FET Strategic Infrastructure Upgrade Fund Projects – Drogheda Institute of Further Education and FET Campus Abbey Road, Navan



# LMETB ORGANISATION CHART



# ECONOMIC IMPACT

## How LMETB's Land & Buildings Department Contribute to the Economy

LMETB's Land & Buildings Department (L&B) are currently managing and delivering over €400million in value of Construction Projects through various schemes funded by both the Department of Education and the Department of Further and Higher Education, Research, Innovation and Science. These projects range in scale and value from large scale new build accommodation projects such as €100million+ Colleges of the Future, to €30+New Build Education Campus, to smaller emergency works projects, such as a €250k Mechanical & Electrical Upgrade, located in various locations right across the two counties.

LMETB's building programme is ever increasing and the L&B Department are delivering at an accelerated pace with a construction spend of over €23.7million in 2022, €56million in 2023 and projected spend of €60million for 2024. This capital spend is not only a huge benefit for the Staff, Pupils, Apprentices and Communities that directly benefit from the use of the new/refurbished accommodation, but it also has a massive benefit for the local economy in so many ways. Not only does the new build accommodation provide better social infrastructure and opportunity to benefit from the resulting economic growth opportunities, including long term full time employment within the education and administration sector, but the actual construction spend itself is estimated to support 440 construction jobs in 2024. With the spend set to increase this year thus increasing and supporting the direct and indirect employment in construction in Louth and Meath (examples of directly sustained jobs being on-site construction work, with the indirect sustained jobs being the likes of the concrete supplier, etc.), LMETB's L&B Department is confident in their aim to increase and sustain this annual number of construction jobs per year to over 500 jobs per annum.



Brian Murphy, Director of Organisation, Support and Development

The immediate employment benefits from LMETB's Capital Spend in creating and supporting direct and indirect jobs within the construction industry not only benefits this industry but it has a wider positive impact for the rest of the local economy as a result of increased incomes and consequential local spend, including increase in jobs in local shops and cafés, etc.

LMETB are committed to excellence and the L&B Department is determined and committed to provide the best possible education and development facilities for the people of Louth and Meath. The true economic and social payback of LMETB's Capital Spend in Education goes further. State of art projects and modern facilities that we are delivering will undoubtedly enhance the teaching and development of the entrepreneurs, politicians, educators, medical specialists, etc., of the future with LMETB providing the best possible spring board and surroundings for the children, adolescence and young people of Louth and Meath to strive and succeed in reaching their full potential – "An investment in knowledge pays the best interest" – Benjamin Franklin.

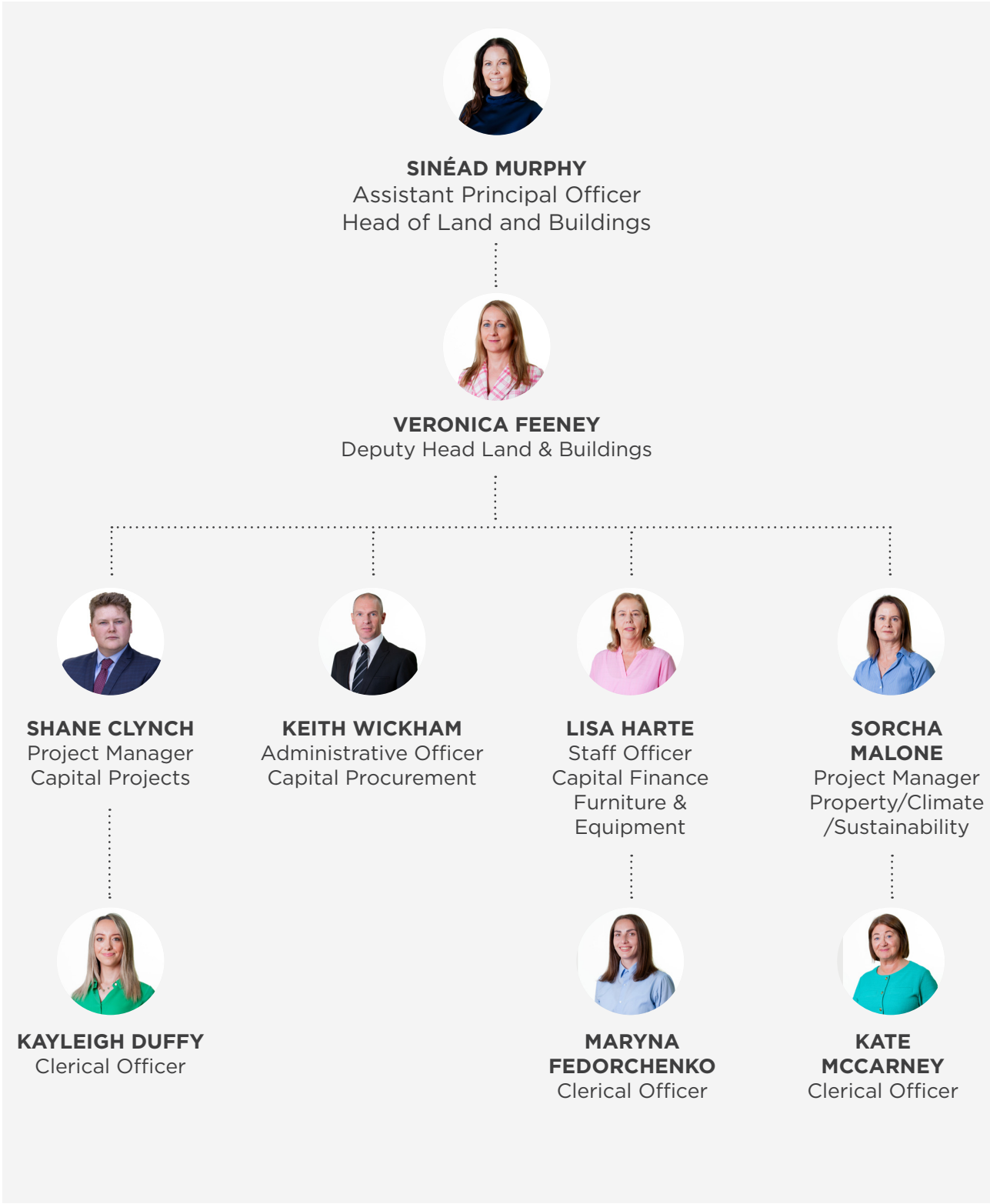
### Capital Spend

2019	- €9.5million	2022	- €23.7million
2020	- €19million	2023	- €56million
2021	- €23million	2024	- €60million est.



# LAND AND BUILDINGS DEPARTMENT

Fundamental to the success of LMETB’s Land and Buildings Department is the ambition and belief that together we can create innovative, progressive learning environments where everyone can thrive.



The Land and Buildings Department is responsible for all Capital Projects, Estates Management, Climate and Sustainability for LMETB.

There are currently €400million worth of Capital Projects ranging from New Schools, Major Extensions, Community Special Schools and Special Classes, New Training Centres, FET College of the Future, Modular Solutions, Minor Works, all at various different stages. In addition to Capital Projects, the Land and Buildings Department is responsible for the maintenance and renovation of existing schools and centres. Maintenance activities can range from minor repairs to major refurbishments, ensuring that the buildings remain functional and up-to-date with modern educational requirements.

The Land and Buildings Department also plays a strategic role in Estates Management. This involves aligning to our Estates Strategy, the modernisation of facilities, optimise space utilisation, create inclusive, accessible environments that foster innovation and learning and adapting to changing educational demands. The Department oversees and manages all site acquisitions, leases/licences and use of LMETB facilities.

Moreover, Climate and Sustainability is a key focus for the Land and Buildings Department. Implementing energy-efficient practices, reducing the environmental impact of buildings, and promoting sustainable construction methods are integral to our operations. This not only helps in reducing operational costs but also aligns with broader LMETB, Department and National and EU Climate Action targets.

Overall, LMETB’s Land and Buildings Department is essential for creating and maintaining high-quality educational environments which ensures that facilities are safe, efficient, and supportive of LMETB’s Strategic Goals, ultimately contributing to the success and well-being of students and staff.

## Capital

- Project Management
- New School Buildings
- New Training Centres
- Colleges of the Future
- Major Extensions
- Community Special Schools
- Modular Solutions
- Capital Procurement
- Risk Management
- Finance and Budget Control
- Minor Works
- Furniture, Equipment and ICT
- Emergency Works
- Summer Works
- Sporting Applications
- Maintenance of Facilities
- Per Cent for Art

## Estate Management

- Estates Strategy
- Land Acquisitions
- Leases/Licences
- Use of Facilities

## Climate & Sustainability

- Retrofit of Schools/Centres
- Climate Action Roadmap
- Building Stock Plans
- Energy Management
- Gap To Target
- Energy in Education



# MODERN METHODS OF CONSTRUCTION

## AMTCE (Advanced Manufacturing Training Centre of Excellence) - Europe's most advanced Manufacturing Training Centre

The Advanced Manufacturing Training Centre of Excellence was founded by Martin O'Brien in 2021. Initial funding was provided by SOLAS and Enterprise Ireland. The AMTCE has received further investment from the Department of Further and Higher Education, Research, Innovation and Science (DFHERIS) under An Taoiseach Simon Harris T.D. to fund the buildings renovation and fit out. Overall project cost is approximately €40million with operational costs and staff costs funded through SOLAS. The AMTCE delivers hands-on skills-oriented training to underpin the transition of Irish enterprise to industry 4.0 and 5.0 based operations, with a focus on manufacturing, cybersecurity, pharma, food and drink, construction and engineering.

According to the IBEC Manufacturing in Ireland 2023 Report, there are 275,000 people employed in the Irish manufacturing sector, 11% of total employment. 36% of the companies surveyed were engaged in Med Tech/ BioPharma and 28% in Engineering. The Centre aims to maintain manufacturing's place at the heart of Irish society, by assisting employers in reskilling and upskilling in the new emerging technologies used in industry 4.0 and encouraging the development of new careers in advanced manufacturing.

To this end, AMTCE is delivering highly practical, skills-oriented training courses by leading industry practitioners in areas that include robotics, Cobotics, additive manufacturing, IIoT, CAD/CAM, industrial control, cybersecurity, 3D concrete printing (3DCP), process optimisation, biopharma, and food processing. Training facilities and equipment include robotics and cobotics labs, CNC/CAM, virtual welding, additive manufacturing, engineering workshop facilities, an Industry 4.0 training line, computer labs and a virtual interactive classroom.



Industry acknowledgement for the pioneering work of Chief Executive in Modern Methods of Construction

Never have so many independent variables coincided to create immense pressure on the construction sector in Ireland. Headlines like, "50,000 new homes needed every year to solve the housing crisis"<sup>[1]</sup> and "63% of construction companies are finding it hard to recruit the talent they need"<sup>[2]</sup> are now commonplace.

To respond to this pressure LMETB are already running courses to address the training and technology deficit within the construction sector. The AMTCE have developed an exciting array of courses which are being rolled out. Courses include BIM, Energy, Drone applications, Blockchain for Construction Health & Safety, along with numerous others to reskill and upskill people to meet the current and future labour demand.

The AMTCE launched a successful 3D concrete printing course in June 2022, since then multiple iterations of the course have been delivered which proves the construction sector is not only interested in learning about the technology, but also how the sector can utilise 3D concrete printing to address the substantial shortfall of housing in Ireland.



3D concrete printed house, Drogheda.

The concept of 3D concrete printing, while new to Ireland, has evolved over the last decade and like all technologies it continues to evolve rapidly. Some of the advantages include a reduced timeline from start to finish for a given project. The project benefits from the high accuracy which the printer can consistently deliver. The machines precision allows critical steps to be brought forward like window and door manufacture, which now can take place in parallel to the construction phase. This is a vast improvement from traditional construction methods.

Training is being conducted at LMETB's Training facility in Drogheda and thanks to support from SOLAS and DFHERIS capital funding was approved for LMETB to purchase a State of the Art 3D concrete printer. This critical investment will become an integral part of the AMTCE's promotion of training to industry, upskilling and building a talent pipeline to meet the current demands of the construction sector. We are delighted to be in a position to provide the necessary supports to allow this technology to be effectively deployed for the benefit of the Irish construction sector. LMETB in collaboration with HTL and Louth County Council are leading a pilot housing project at Grange Close, Dundalk where three new homes are being built. The construction using the 3D printing is 25% faster than traditional build.

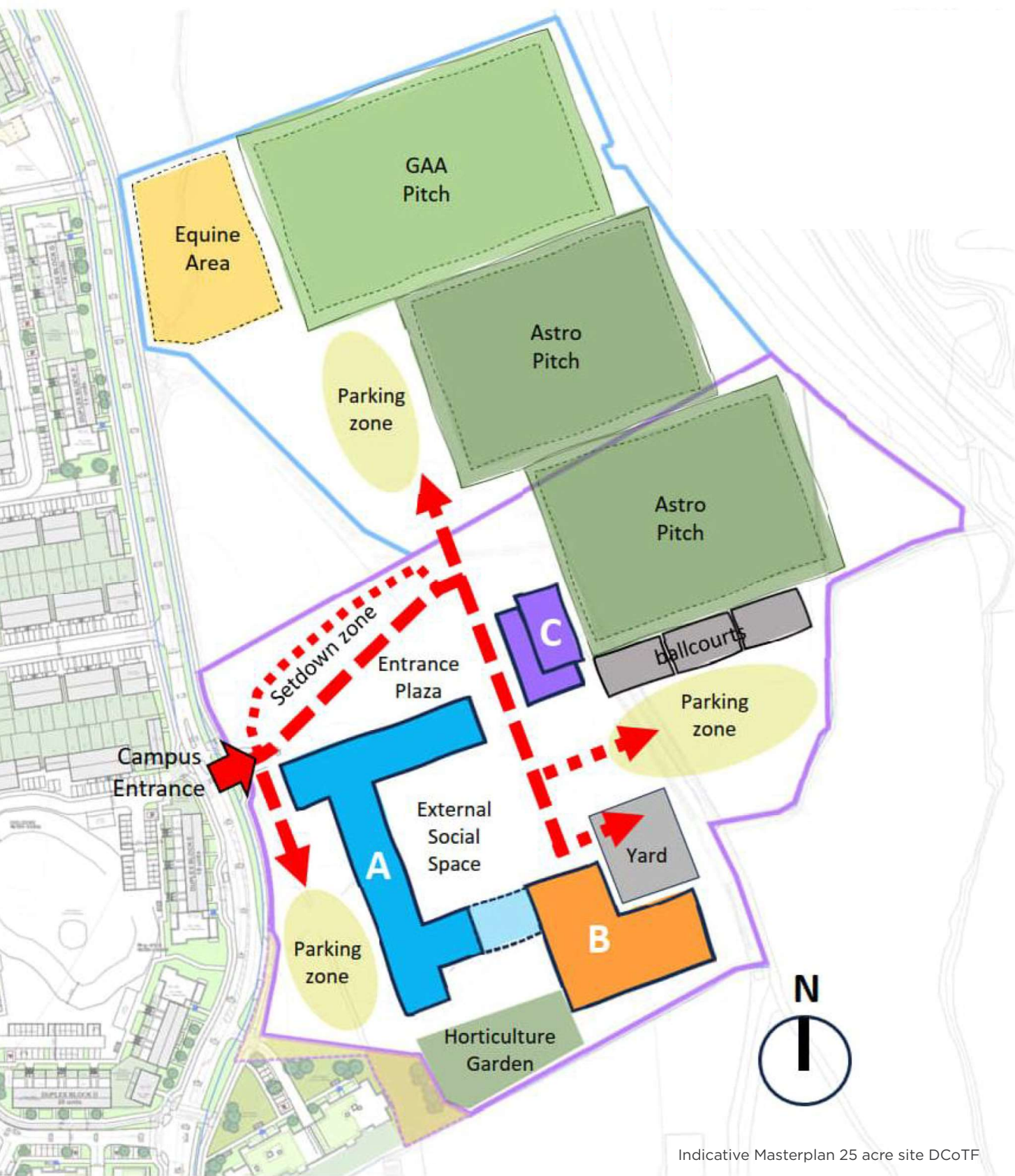


[1] <https://www.irishtimes.com/business/economy/50-000-new-homes-needed-every-year-to-solve-housing-crisis-industry-report-1.4645408>

[2] Irish Tech News 29 July 2022



# DUNBOYNE COLLEGE OF THE FUTURE



Indicative Masterplan 25 acre site DCoTF

LMETB have been successful in securing funding for a new 'College of the Future' for Dunboyne. Announced by An Taoiseach Simon Harris T.D., (then Minister for Further and Higher Education, Research, Innovation and Science) a new Further Education and Training (FET) Dunboyne College of the Future will see the College exiting from 27 industrial warehouse units, 5 prefabs and 6 off-site specialist centres into a new State of the Art, modern, purpose built College. Approval to purchase a 25 acre site has been secured from DFHERIS/SOLAS and LMETB are in the process of finalising contract documents.



Julie Ward McDermott  
Director of Further Education



An Taoiseach Simon Harris T.D.

The vision of SOLAS and DFHERIS for FET Colleges envisions a transformative approach for FET aiming to create dynamic, inclusive, and adaptive learning environments that meet the evolving needs of students and society. This model emphasises the integration of advanced digital technologies, ensuring that the Colleges are equipped with cutting-edge tools to enhance teaching and learning experiences. By fostering a blend of in-person and virtual learning, the model supports flexible and personalized educational pathways, catering to diverse learning styles and life circumstances.

A core component of the "College of the Future" is its commitment to sustainability and green practices. ETB's are encouraged to adopt eco-friendly infrastructure and operations, reducing their carbon footprint and promoting environmental stewardship. This aligns with broader national and global sustainability goals, preparing students to contribute to a greener future.

Industry collaboration and skills alignment is another priority, ensuring that curricula are relevant to current and future job markets. Partnerships with businesses and community organisations facilitate practical learning opportunities, such as apprenticeships and internships, bridging the gap between education and employment.

Social inclusion is another pillar of the "College of the Future." The model seeks to eliminate barriers to education, promoting equity and access for all students, regardless of their background. By fostering a supportive and inclusive campus culture, Dunboyne College of the Future aims to create an environment where every student can thrive and succeed.







# HISTORIC DROGHEDA

## **LMETB to oversee €75million investment in Drogheda.**

LMETB and its place in Drogheda's educational odyssey ...

*The ancient town of Drogheda was established by Royal Charter by King Henry II in 1194, and over the centuries it has forged its place as a recognised centre of educational excellence.*

*LMETB plays a central role in the educational sphere in the town today, and in examining that role, it is important to record some of the town's educational history. The town's citizens' educational contribution to Ireland and the wider world would require a deep tome to record its achievements, but to name but a few giants of the educational sphere the town boasts, names such as William of Drogheda a co-founder of Oxford University in 1231, James Cullen the mathematician, John Phillip Holland the CBS teacher and inventor of the submarine, and in recent times Professor of Economics at Oxford University, Peter Neary, are among the elites. Indeed, it was T.K. Whitaker who in 1969 was the Secretary of the Dept. of Finance who oversaw the funding of free education for secondary schools, at a time when the majority of pupils in the country left school at 14. Educated in the CBS in Drogheda, Whitaker knew the value of education, he regularly arrived at the school at 8.30 am to study before the teachers arrived at 9 pm, and he came in 1st place in several competitive State department exams he took during his career. In the 1840s the Irish harp instrument was on the verge of becoming extinct, and the only place left in the world teaching the instrument was the Drogheda Harp Society School in Drogheda. In 1670, following the Declaration of Breda, Bishop Oliver Plunkett, a former college professor in Rome opened Ireland's first-ever multi-denominational school in Drogheda and set the benchmark for a society where people of all religions were educated together. It catered for 150 boys, 100 Catholics and 40 Protestants, with Jesuit priests brought from colleges in Rome to teach in it.*

*The Drogheda Grammar School, founded under Royal Charter in 1669 by Erasmus Smith has as its loftiest claim that it educated the British Prime Minister Arthur Wellesley the Duke of Wellington, who defeated Napoleon Bonaparte at the Battle of Waterloo and who achieved international fame when he brought into law the first international treaty to enforce the abolition of the slave trade at the Congress of Vienna in 1815.*

*The town has grown from a population of 20,000 in the 1800s to one approaching 50,000 today. This expansion has had its own investment requirements and with thousands of new homes currently under construction, the demand for educational facilities is growing apace. The gang feud that erupted in the town in 2020 catapulted the town and its damaged image onto news channels nationally and internationally, as the police grappled with armed criminals. One of the key triggers of the feud cited by many quarters in the community was the lack of post-secondary school opportunities. The Drogheda Institute of Further Education at The Twenties and King Street were respected in the town, but gaps in the offering were apparent, particularly the need for an apprenticeship centre.*

*LMETB was expedient in rallying to the call of the community and some key announcements spearheaded new confidence in the town's educational offering. Among these announcements were; The establishment of an Apprenticeship Centre at the M1 Business Park, the extension of DIFE college at The Twenties, the building of a new LMETB headquarters in the town, the refurbishment of King Street and the classrooms extension of St Oliver's College. The town also boasts two Gaelscoils with 600 pupils between them, which places the town on a level with many large Gaeltacht areas in the west of Ireland. The needs of these children as they transition into post-primary and third-level education is an area of opportunity and need.*



On the Port Access Northern Cross Route road, there are currently 17 building sites for new housing estates and 7,000 homes are to be built there over the next five years. The boom described in the local media as a building frenzy will also create a looming need for educational spaces for the new inhabitants of the town.

The Drogheda Leader described the new road as “The biggest new housing estate in Europe”. LMETB is preparing to match the requirements of the new Drogheda, one which has seen the criminal feud being crushed by the gardai, and from that recent past a new dawn has risen. LMETB is central to the community and its educational well-being. Its dedicated staff are highly motivated and proud to serve the needs of a local population who appreciate the quality of the courses offered. The challenge of change is what LMETB is all about, and we are ready for the new chapter of the town and region’s rich fabric of learning.

Step with us in the future.



Des Grant  
Editor, Drogheda Leader

“This significant investment in education facilities in Drogheda is most welcome and is testament to the excellent track record of LMETB”

LMETB’s response to the Geiran Report

In response to the illegal gang feuding LMETB’s Chief Executive Martin O’Brien was tasked by Minister Heather Humphreys T.D. to put in place supporting structures to deliver services in Drogheda to support the implementation of the report and to host the administration of the Implementation Board. Following consultation, the report was ratified at cabinet with a government commitment to put a ‘special focus’ on Drogheda, including the prioritisation of funding applications for the area that addressed the recommendations contained in the report. In true LMETB style LMETB responded immediately, rose to the challenge, took action and to date, led by Land and Buildings Department, LMETB have 7 major projects on going in Drogheda with a budget of over €75million. These high-quality education facilities and services which will provide a much needed stimulus for the town and surrounding area and will help tackle some of Geiran’s recommendations and address local issues.

“The Drogheda Implementation Board, hosted and supported by LMETB, was established in late 2021 by Minister Helen McEntee T.D. to deliver actions to address Community Safety and Wellbeing in Drogheda as set out in Vivian Geiran’s Report and the Drogheda Implementation Plan. Geiran’s report fell under two broad headings; the need for improved interagency co-operation in the administration and delivery of services in Drogheda, and the need to resource services and provide additional services in the area.

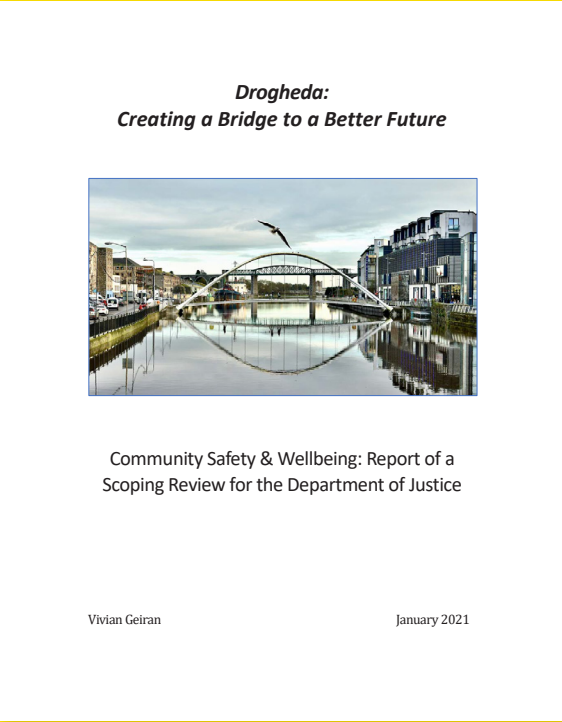
The Drogheda Implementation Plan contains some 73 actions to address a broad range of issues including in the area of education and training. Geiran identified a real need to explore the potential for more apprenticeship and pre-apprenticeship programmes in Drogheda, specifically through Drogheda Institute of Further Education. He also identified the need to locate third level programmes in Drogheda which is the fastest growing town in Ireland.

Significant progress has already been made in relation to some of these actions. The Minister for Further and Higher Education announced funding of some €6m for the expansion of DIFE to include the development of a new flexible multi-purpose tertiary education facility which will include community accessible spaces. Minister Simon Harris T.D. subsequently announced the establishment of a major Electrical Apprenticeship Centre for Drogheda which provides apprenticeship training to over 300 apprentices annually.

The new facility which opened last July saw 20 new permanent jobs created in Drogheda at various levels. This significant investment in apprenticeship facilities in Drogheda is most welcome and is testament to the excellent track record of LMETB in delivering high quality educational facilities and services to the town of Drogheda and will provide a much needed stimulus for the attraction of further investment in the town and surrounding area”



By Michael Keogh, Chair of Drogheda Implementation Board (former Assistant Secretary with the Department of Education)





# NEW LMETB ADMINISTRATIVE HEADQUARTERS

The new LMETB administrative headquarters building in Drogheda represents a significant investment in the region's educational infrastructure. A decision was taken by Government that the headquarters of LMETB would be in Drogheda.

A site was identified on the grounds of St. Oliver's Community College. This State of the Art facility will centralise administrative functions, enhancing operational efficiency and support for educational and Further Educational and Training initiatives. Designed with sustainability in mind, the building will feature modern amenities and eco-friendly technologies. The headquarters will create local construction jobs and, upon completion, attract professionals to the area, boosting the local economy.

This new headquarters will be an iconic, modern and futuristic building. It will centralise for the first time in the history of LMETB administration of all services provided at first and second level, FET, Youthreach, Community, Training and Apprenticeship.

Additionally, the new facility will serve as a hub for community engagement and educational development, reflecting LMETB's commitment to fostering growth and innovation in Drogheda.

Locating an iconic public building of this scale and character will also contribute to the rejuvenation of Drogheda. It will bring a heightened sense of importance to the town. Every large town requires a certain critical level of public services and civic buildings.



LMETB are delighted to be in a position to  
locate our new headquarters in Drogheda.



# DROGHEDA COLLEGE DONORE CAMPUS

## New Electrical Apprenticeship Centre

Drogheda's new Electrical Apprenticeship Centre, situated ideally just off the M1 at the Donore Industrial Estate, neighbour to Amazon, opened its doors last July to the first cohort of electrical apprentices and has been a major success. This State of the Art facility provides aspiring electricians with hands-on experience and advanced technical skills in a modern learning environment. Equipped with cutting-edge equipment and led by experienced instructors, the centre aims to meet industry demands for skilled electrical professionals.

The apprenticeship program not only enhances career prospects for participants but also contributes to the local economy by filling essential roles in construction, maintenance, and renewable energy sectors. Overall, the centre represents a significant investment in workforce development and regional growth in Drogheda. The opening of this pioneering centre was completed in 16 weeks by the Land and Buildings Department, it was officially opened by the then, Minister for Further and Higher Education, Research, Innovation and Science, An Taoiseach Simon Harris T.D. and delivers training to over 300 electrical apprentices annually.



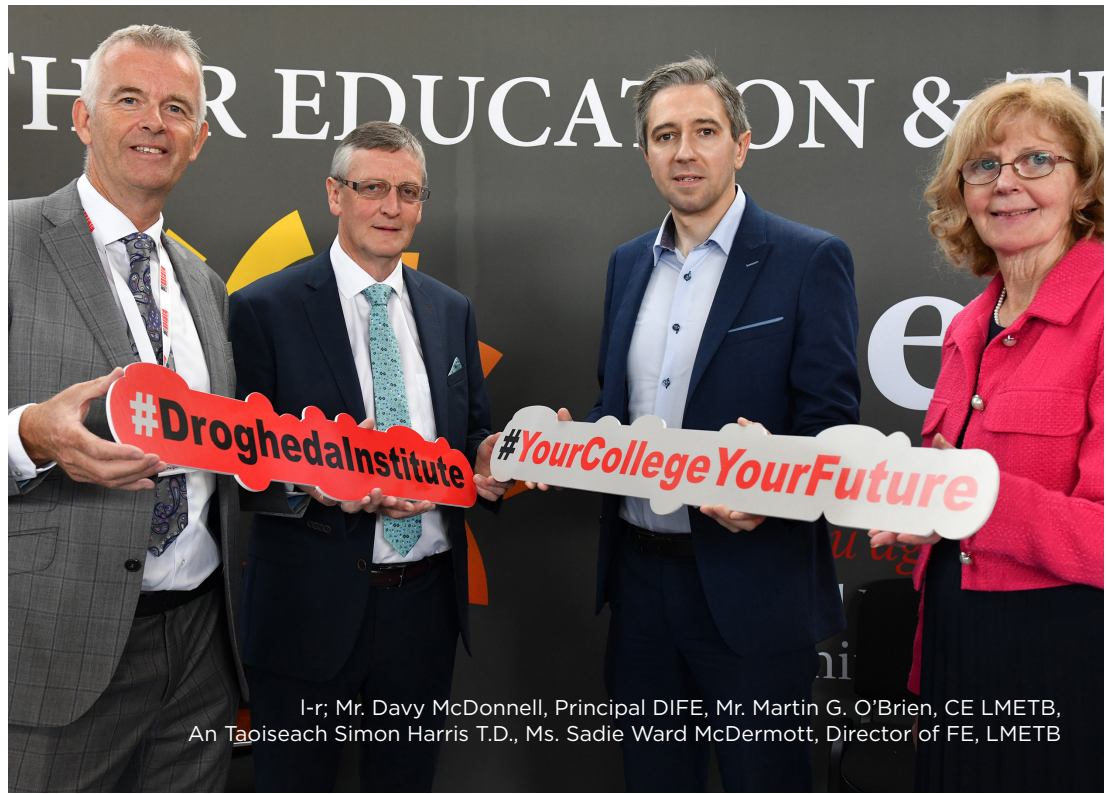


# DFHERIS & SOLAS INVESTMENT IN DROGHEDA



## Drogheda College DIFE Campus

The DIFE SIUF (Strategic Infrastructure Upgrade Fund) extension project (€7million) is huge for Drogheda Institute of Further Education (DIFE) as the College is constantly aiming to expand and modernise its facilities. The new extension will enable and enhance learning environments with State of the Art classrooms, laboratories and will be a multi-tertiary hub supporting diverse educational programs and also includes changing facilities for the only full size Astro Turf soccer pitch in Drogheda. The DIFE SIUF extension project strengthens educational infrastructure and reinforces DIFE's role in shaping the future workforce of the region. DIFE has linked up with DCU and there is 12 places ring fenced for nursing studies students in Drogheda. LMETB's vision for Drogheda is to bring all FET services provided by LMETB in Drogheda onto one site in the future.



l-r; Mr. Davy McDonnell, Principal DIFE, Mr. Martin G. O'Brien, CE LMETB, An Taoiseach Simon Harris T.D., Ms. Sadie Ward McDermott, Director of FE, LMETB



# DEPARTMENT OF EDUCATION INVESTMENT IN DROGEHDA

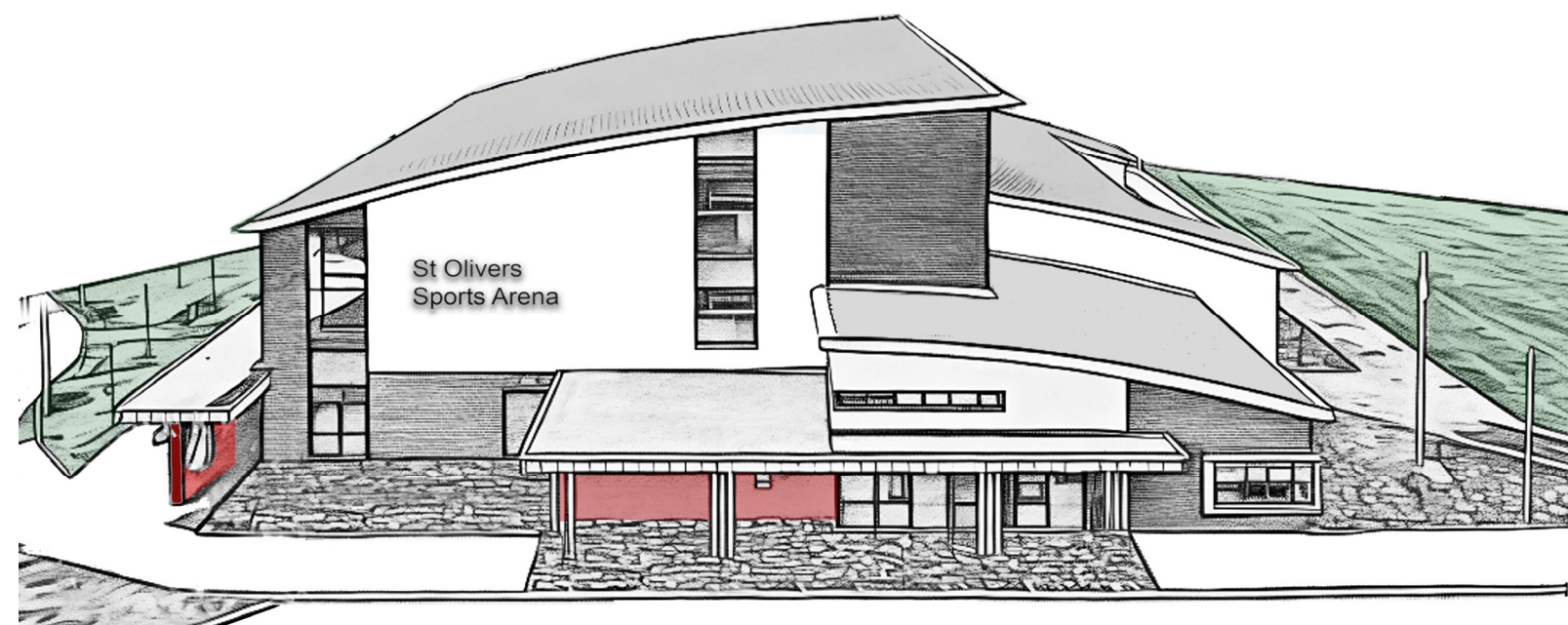


## St. Oliver's Community College - Ireland's largest school - Major Extension

The Department of Education approved a major extension for St. Oliver's Community College, Drogheda, the largest school in Ireland! LMETB lodged plans and designs with the Department of Education and we await approval to proceed with the preferred option which will see the school extended by 5,635m<sup>2</sup>. As an interim solution modular accommodation was installed last year with a further block of 8 classrooms being installed in 2024. The site at St. Oliver's Community College runs to 20 acres and was chosen as the site for the new LMETB Headquarter administration offices.



## LMETB calls on the Department of Tourism, Culture, Arts, Gaeltacht, Sport and Media to invest in Drogheda



## Application for a new Sports Arena at St. Oliver's Community College under the Large Scale Sporting Infrastructure Fund

LMETB and Drogheda Wolves Basketball Club applied for a new Sports Arena for Drogheda in July. The estimated project costs is €12.7million with match funding being provided by the Department of Education. This major sporting facility located on the grounds of St. Oliver's Community College will neatly serve the physical education needs of students in attendance at St. Oliver's and will provide a much-needed basketball arena for Drogheda Wolves.

In addition it will address a very important recommendation made by Mr. Vivian Geiran in his report into criminality in Drogheda- Creating a Bridge to Better Future.

The project has received a priority one ranking by both Louth County Council and Special Olympics Ireland. LMETB are pleased that the plans submitted provide for changing places changing rooms which is much needed for a facility of this nature.

The planned arena 2,158m<sup>2</sup> will accommodate three full size basketball courts arranged in a versatile layout. Stored away tiered seating will enable hundreds of spectators to watch showcase events.

The application supports LMETB's Estates Strategy and Use of Facilities policy where all LMETB facilities are made available to the wider community. The development of the overall application/business case was overseen by the Land and Buildings Department in consultation with Drogheda Wolves, locally elected representatives, school management and our Design Team Consultants.



# DROGHEDA COLLEGE – KING STREET CAMPUS

The King Street building was designed by Ralph Henry Byrne (1877-1946), son of architect William Henry Byrne of the practice W.H. Byrne & Son. Plans for the main building and a caretaker's lodge now known as The Garage were drawn up by 1934. W.H. Byrne & Son were known for commissions notable buildings such as former Permanent TSB O'Connell Street Lower, Dublin (1919), Mary Immaculate College Main Building, Limerick (1899) and the National Maternity Hospital, Holles Street (1937).

St. Laurence's school as it was originally known was officially opened by the Minister for Education, Thomas Derrig (1897-1956) on 6th June 1936. Thomas Derrig stated "it was another step in the fitting of the children to take their place in the battle of life".

In former times the King Street campus was used as a headquarters for Drogheda VEC and provided education services to both PLC and second level students. Drogheda received a new second level school at The Twenties, Moneymore, Drogheda however the pressure to provide a PLC surpassed the requirement for second level places and this new second level school at The Twenties became Drogheda Institute of Further Education (DIFE) and remains so to this day.

Second level provision was discontinued at the King Street facility and this building was utilised by Further Education and Training facilities for Youthreach, Adult Guidance BTEI, VTOS, Literacy, Numeracy and Community Education. In the past two years extensive upgrade works to the electrics and heating system have been completed.





# FURTHER EDUCATION CAMPUS, NAVAN

## 2023 saw the opening of a new Traineeship at Abbey Road

LMETB has established a strong traineeship partnership with Intel, providing students with valuable hands-on experience in the high-tech industry. This collaboration offered at the FET Campus Navan offers trainees opportunities to work on real-world projects, gaining practical skills and insights into advanced manufacturing and engineering processes.

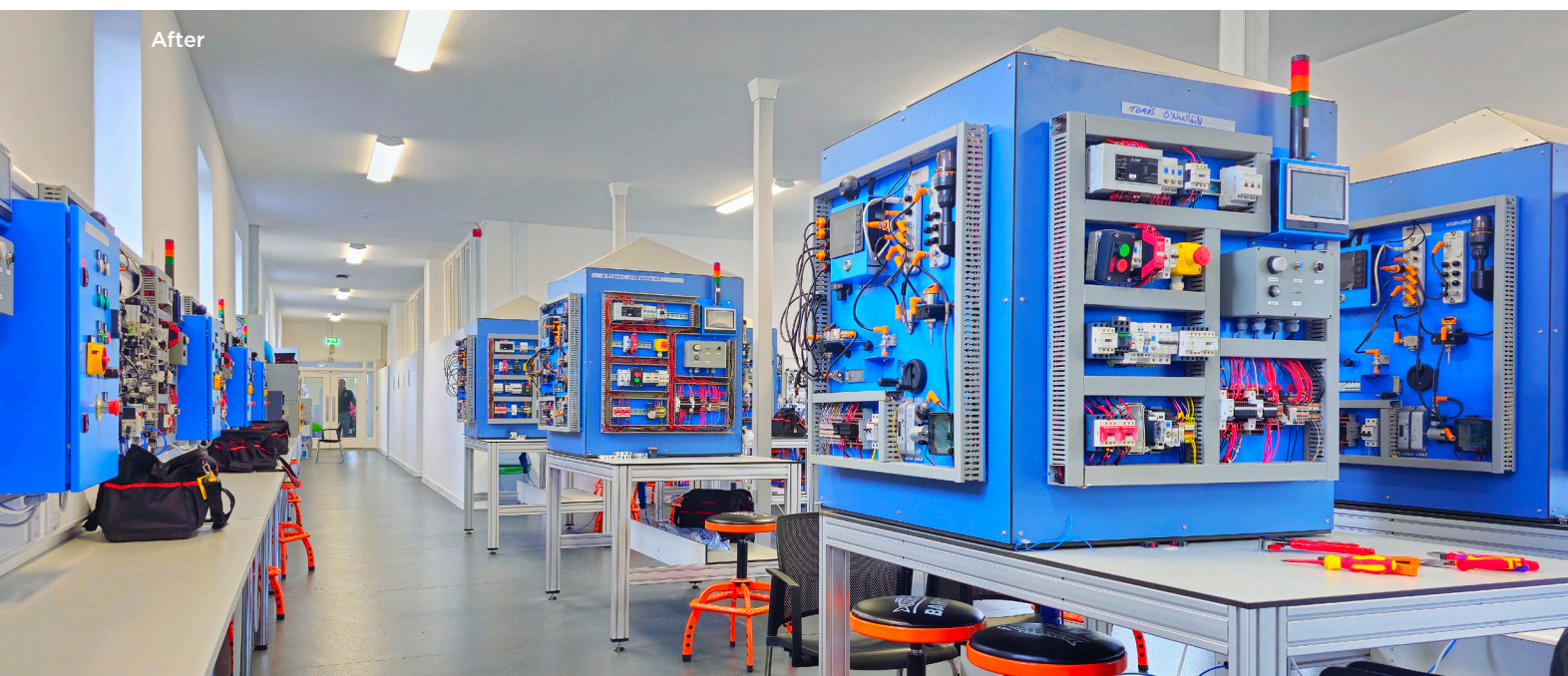
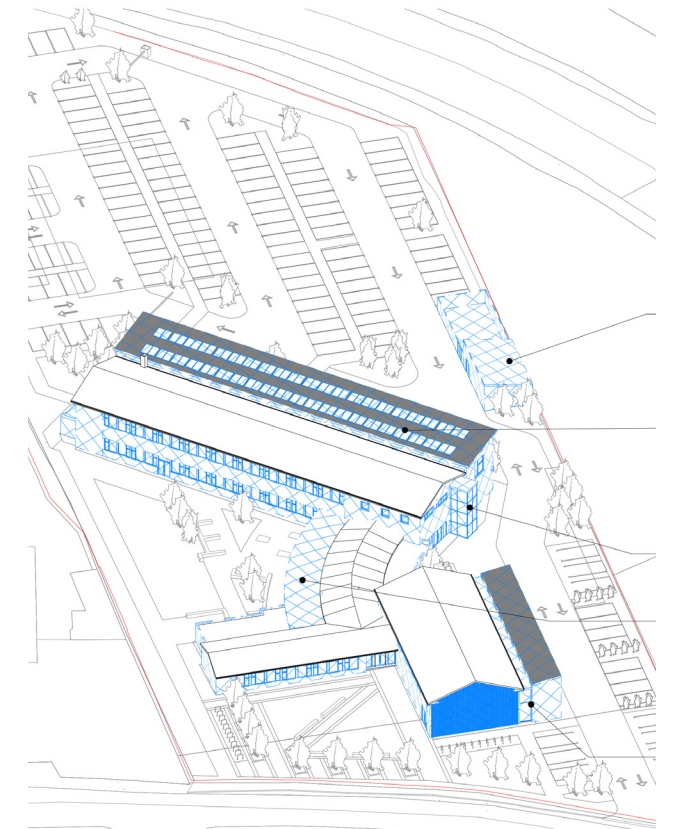
The traineeship program ensures that participants acquire relevant, industry-specific competencies. This partnership not only enhances the employability of LMETB students but also helps Intel cultivate a skilled talent pipeline, supporting innovation and growth in the technology sector. The accommodation was modified from general classrooms by the Land and Buildings Department in record time.



Tour of Abbey Road FET Campus. An Taoiseach Simon Harris T.D., Mr. Andrew Browne CE SOLAS, Mr. Martin G. O'Brien, CE LMETB, Damien English T.D., Ms Sinéad Murphy, Head of Land and Buildings LMETB

The FET Abbey Road Campus in Navan received approval under the SOLAS Strategic Infrastructure Upgrade Fund to upgrade the town centre building and site of c. 2 acres for the purposes of Further Education and Training provision.

The project will include removal of prefabricated structures and refurbishment works which will modernise the campus, improving technological infrastructure, and creating State of the Art learning environments. LMETB's strategy as proposed is to further aggregate Further Education & Training provision on the Abbey Road site and discontinue several leases.



FET campus, Navan





## **SCHOOLS ON SITE**





# SCHOOLS ON SITE

The Land and Buildings Department manage a wide range of school building projects ranging from Special Education Needs units, to modular solutions, small scale extensions to large scale school campuses. The following pages give a brief overview of these projects. All elements from initial application to handover of the building are under the remit of the Land and Buildings Department. The success of LMETB's school building projects is as a result of good leadership, the work ethic of the Land and Buildings Team and our cooperation with all key stakeholders, not limited to the Department of Education, Design Teams, Contractors, and School Management.

This success has been recognised by the Department of Education and by the Comptroller & Auditor General.



Sod Turning at O'Carolan College Nobber by Minister of State Thomas Byrne T.D. and Minister Helen McEntee T.D.



## O'CAROLAN COLLEGE, NOBBER

- New school building
- Construction Cost: €28million
- 7,406m<sup>2</sup>
- Est. Completion Date: 2025
- 600 pupils

## JOHNSTOWN EDUCATION CAMPUS, NAVAN - COLÁISTE NA MÍ & ST. MARY'S SPECIAL SCHOOL

### Project includes the restoration of a listed building

- Phase II Coláiste na Mí, new school for St. Mary's Special School
- Construction Cost: €37million
- 10,872m<sup>2</sup>
- Est. Completion Date: 2025
- 1,084 pupils







## BUSH POST PRIMARY SCHOOL

- Major Devolved Extension, Phase 1 complete 2023
- Construction cost: €10.6million
- 3,135m<sup>2</sup>
- Est. completion date: 2024
- 815 pupils

Bush Post Primary School is the only LMETB school that has an Olympic standard 6 lane athletics track. In partnership with Glenmore Athletic Club an application to extend the track to 8 lands and resurface the existing lanes was submitted to the last call for Local Sports Partnership funding. We await the outcome.

Bush Post Primary School,  
Carlingford, Co. Louth



## ST. PETER'S NATIONAL SCHOOL, DUNBOYNE

- Major Devolved - New School
- Construction cost: €6million
- 1,512m<sup>2</sup>
- Est. completion date: 2024
- 100 pupils



Minister for State Thomas Byrne T.D. is joined by locally elected representatives, members of the Board of Management, Parents Association Design Team and Contractor at the Turning of the Sod for St. Peter's National School Dunboyne.



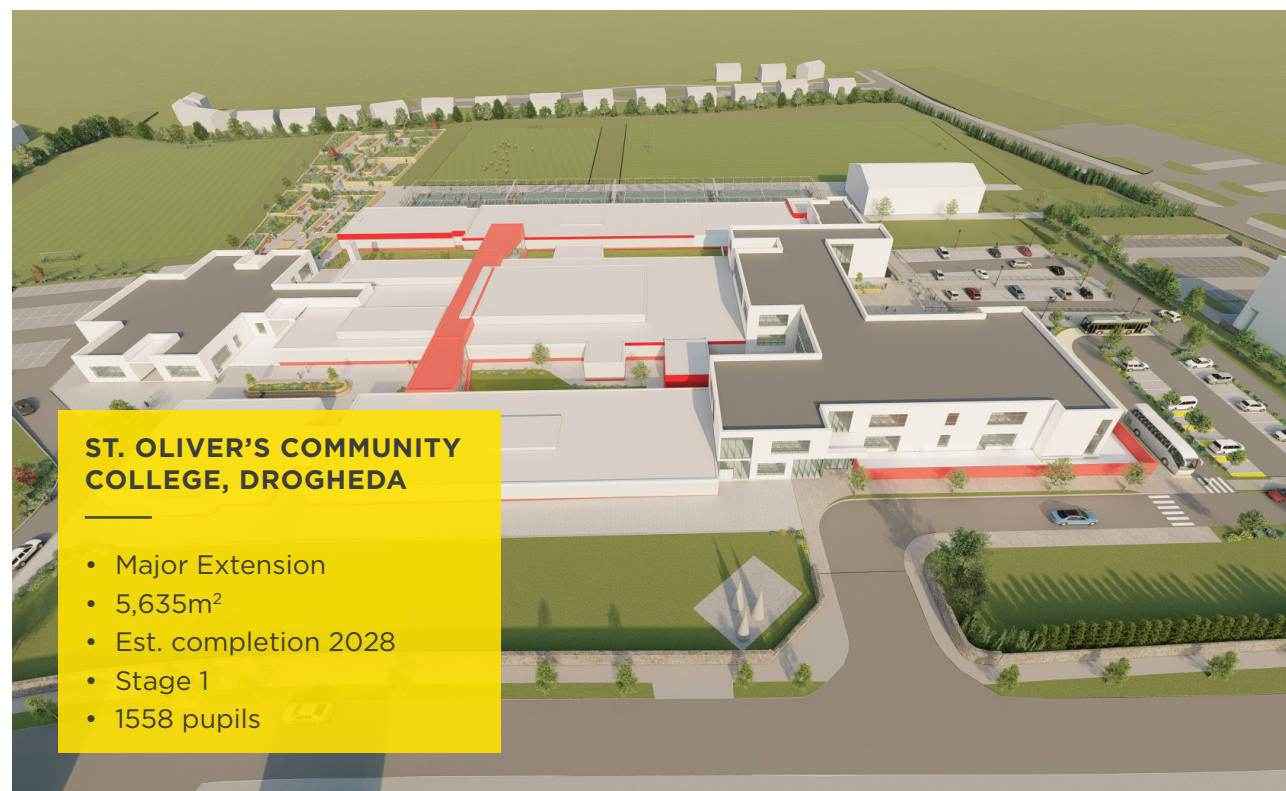


## SCHOOLS IN DESIGN





# SCHOOLS IN DESIGN







**ARD RÍ COMMUNITY NATIONAL SCHOOL  
AND ST. ULTAN'S SPECIAL SCHOOL NAVAN**

- New School Campus
- Stage 2b
- 7,951m<sup>2</sup>
- Est. completion: 2027
- 600 pupils



**ST. OLIVER POST PRIMARY  
SCHOOL, OLDCASTLE**

- Permanent Extension
- Stage 1
- 1,230m<sup>2</sup>
- Est. completion: 2027
- 621 pupils

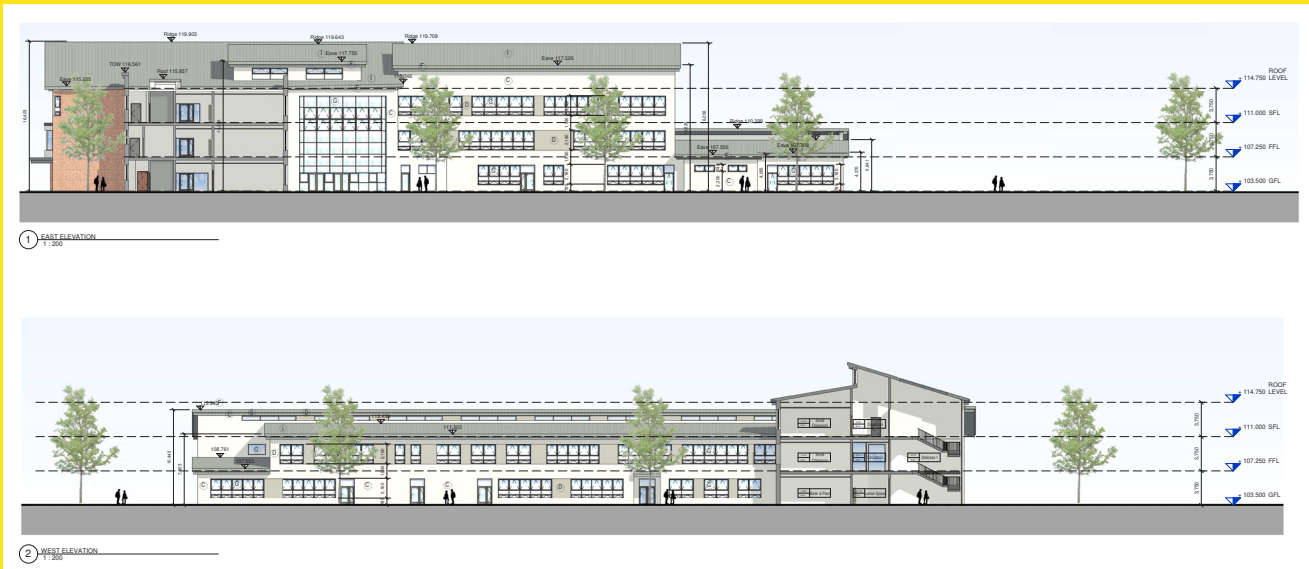


**DE LACY COLLEGE,  
ASHBOURNE**

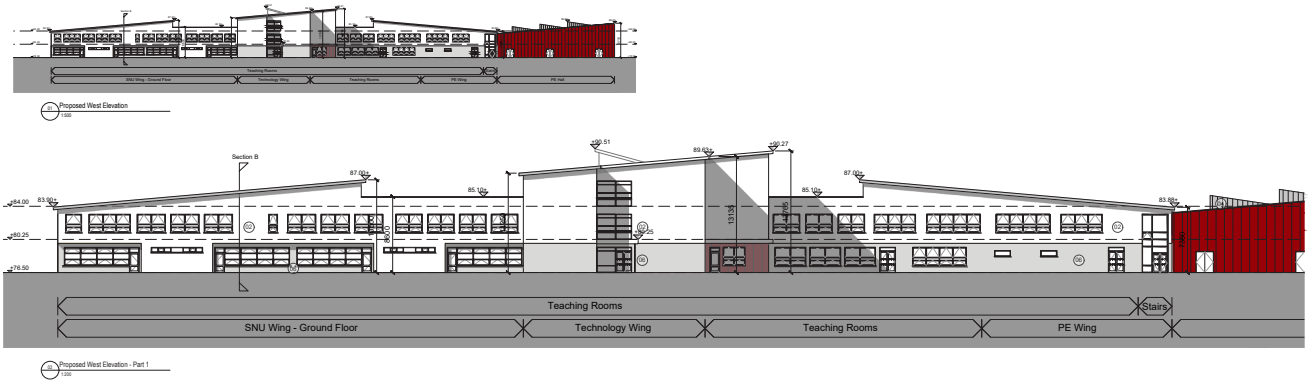
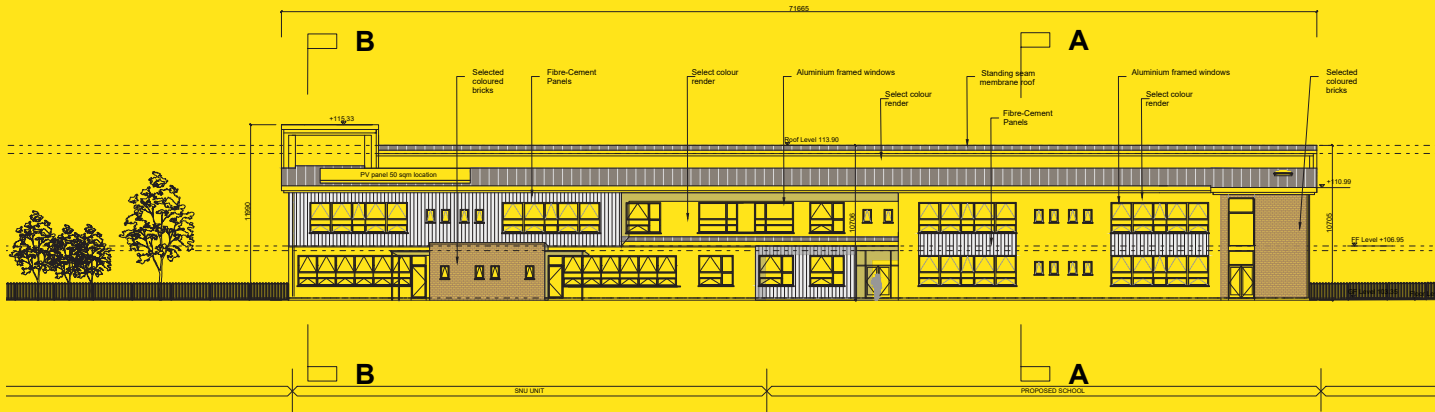
- Permanent Extension – Phase II
- 5,086m<sup>2</sup>
- Stage 2b
- 1,000 pupils



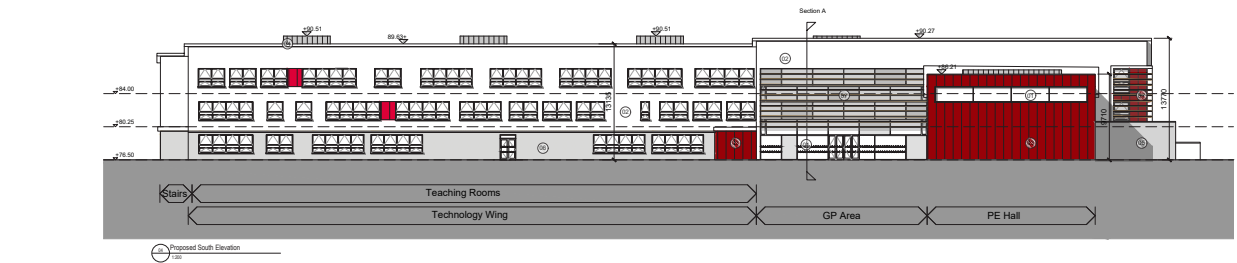
COLÁISTE RÍOGA, DUNSHAUGHLIN, 1,000 PUPIL POST PRIMARY SCHOOL



DUNSHAUGHLIN COMMUNITY NATIONAL SCHOOL - 8 CLASSROOM PRIMARY SCHOOL



ENFIELD COMMUNITY COLLEGE,  
1,000 PUPIL POST PRIMARY SCHOOL



FAUGHART COMMUNITY NATIONAL  
SCHOOL, DUNDALK, CO. LOUTH

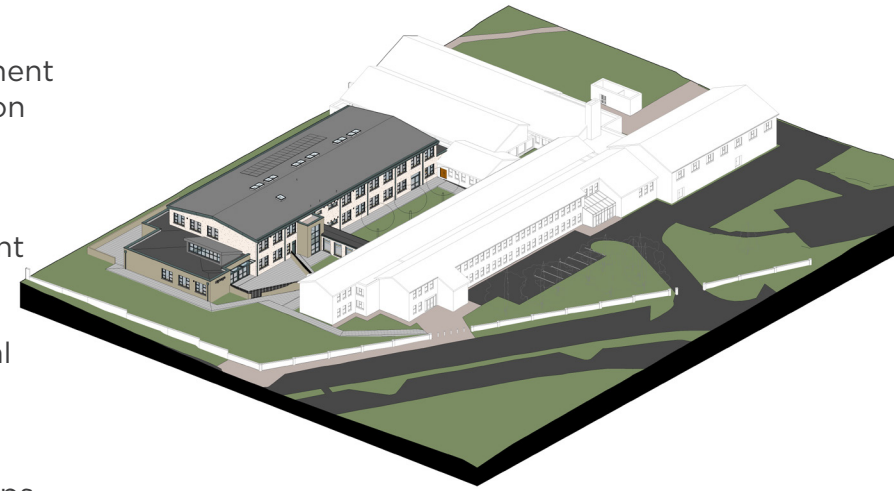
Faughart CNS has been approved for a 1 classroom permanent extension. LMETB took patronage of the school in 2018 and the school has grown from strength to strength in recent years.





## PROJECTS DEVOLVED TO LMETB TO SUPPORT OTHER PATRONS

LMETB's Land and Buildings Department have built up an exceptional reputation for administering and managing school building projects. As a result, in addition to LMETB's own projects, (€56m spend in 2023) the Department of Education requested that LMETB provide assistance to other patron bodies. These projects include Special Needs Schools, Special Needs Units, permanent school extensions and modular solutions. By leveraging its experience and resources, LMETB helps patrons achieve their infrastructure goals, supporting educational and community development. This collaborative effort not only enhances the educational environment but also strengthens community ties, reflecting LMETB's commitment to fostering an integrated approach to regional development and educational excellence.



### ST. CIARÁNS COMMUNITY SCHOOL, KELLS

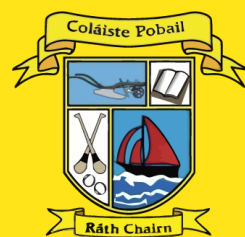
- Permanent Extension
- Stage 2b
- 2,413m<sup>2</sup>
- Est. completion: 2026

### COLÁISTE POBAIL RÁTH CHAIRN

#### Chosen to be included in Climate Action RePower EU Pathfinder Programme 2024/25.

Our Gaelscoil Coláiste Pobail Ráth Chairn has been chosen as one of 40 schools under the Climate Action RePower EU Pathfinder Programme 2024/25. A deep retrofit of the school will bring it up to least a B BER rating with a target of 51% reduction in primary energy use. The Department of Education, under Mr. John Dolan, Technical Manager successful secured €81million for this programme which is the largest of five investments included in Ireland's funding allocation.

The decarbonisation and deep retrofit will make a massive difference to the students and staff of Coláiste Pobail Ráth Chairn and the Land and Buildings team are very much looking forward to being involved in this project which will enable LMETB bring forward the learnings to our other school projects.



### SKERRIES EDUCATE TOGETHER NATIONAL SCHOOL, SKERRIES, CO. DUBLIN

LMETB are the first ETB in Ireland to be directed by the Minister, under the Education and Training Board Act 2013, to manage and oversee a building project outside of its functional area. LMETB are pleased to be able to cooperate, support and assist other patron bodies in this regard.

- 4 Classroom Special Needs Extension
- Stage 3
- 796m<sup>2</sup>
- Est. completion: 2025











**PROJECTS COMPLETED | 2023**





# PROJECTS COMPLETED

LMETB achieved handover of 7 building projects in 2023 consisting of Modular solutions at St. Oliver's Community College, Drogheda, St. Michael's Loreto Navan, Beaufort College, Navan, Ard Rí Community National School, the Special Needs Unit at St. Peter's College, Dunboyne where the late Chairman of LMETB Cllr. Damien O'Reilly was instrumental in gaining approval for the unit, and also a Special Needs Unit for St. Mary's National School in Enfield. Phase 1 of our Major Devolved Project at Bush Post Primary School was also handed over.



## ST. PETER'S COLLEGE, DUNBOYNE - NEW 4 CLASS SPECIAL NEEDS UNIT

- Construction Cost: €2.8million
- 8,84m<sup>2</sup>
- Handover: July 2013



## ST. MARY'S NATIONAL SCHOOL, ENFIELD - NEW 3 CLASS SPECIAL EDUCATION NEEDS

- Construction Cost: €2million
- 610m<sup>2</sup>
- Handover: September 2023





I-r Fiona Kindlon, Director of Schools, Dorothy Butterly, BOM, Cathal O'Hare, OHMG, Harry Cromie, OHMG, Lorraine Dunne, Dept. of Education, Martin Lennon, MD, OHMG, Sinéad Murphy, LMETB, Seamus McCarthy DP, Ashbourne CNS, Patrick Kiernan, Dept. of Education, Jenny Byrne, Principal Ashbourne CNS, Martin G. O'Brien, CE, LMETB, Min. Helen McEntee T.D., Min. Thomas Byrne, T.D., Cllr. Wayne Harding, Cathaoirleach, LMETB



### Ashbourne Community National School

New 16 Classroom school with Special Needs Unit, celebrated their official opening on Worlds Children's Day, 31st May 2024.

The school and LMETB were delighted to welcome Minister Helen McEntee T.D. and Minister of State Thomas Byrne T.D. to officiate the ceremony. Ashbourne CNS opened its doors under the patronage of LMETB in September 2019 and now has a student population of just under 300 students.





**Ard Rí Community National  
School, Navan – 1 class  
Modular solution**



**Beaufort College, Navan –  
General Class and Specialist  
Room Modular solution**







## **MAKING A DIFFERENCE**



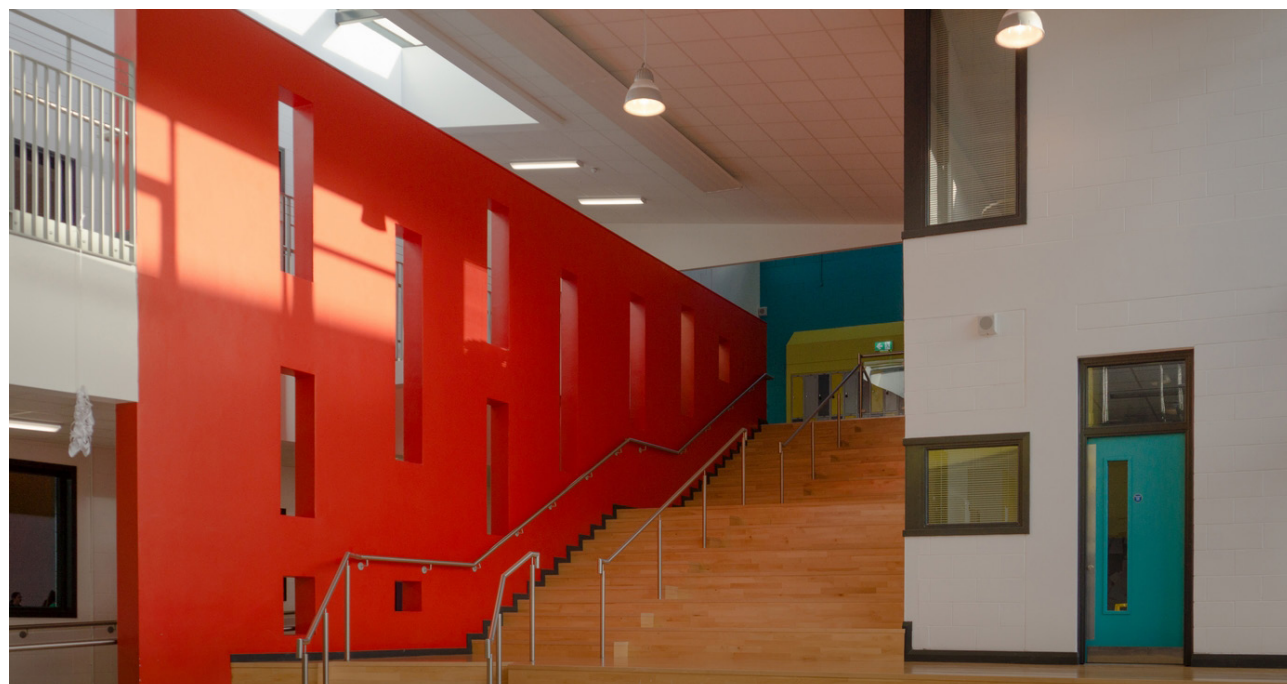


# CASE STUDY – COLÁISTE CLAVIN, LONGWOOD

The team in Land and Buildings place the student and learner at the heart of everything we do. We aim to deliver buildings that inspire, motivate, encourage creativeness and make a difference to each student and learner.

It is important to us that our students, learners and teachers enjoys spending their days in our schools and centres. We continuously strive to achieve the highest possible standards and quality of the buildings as we believe that education architecture has the ability to inspire the next generation and nurture students and learners to reach their full potential.

In 2021 our new Longwood school had an incoming student who was visually impaired. To prepare for that student, the principal discussed with a 5th year student who was already in the school, has albinism and has significant visual impairment to get her feedback on the building and to establish if there were further improvements that could be made.



*Dear Jackie and Sinéad,*

*I thought you might be interested to hear about a student's feedback on the school building which we received this week.*

*We are advised that we are having a visually impaired student enrolling this year, and in order to prepare for that a person from NCBI wishes to come to the school to assess areas that we might assist the student. In the interim we decided to speak with a 5th Year student who is already in our school, has albinism and has significant visual impairment to get her feedback on the building.*

*The school is an amazing place for her, and has been so easy for her to find her way around because, every surface is smooth, with no lips or trip hazards at any entrance or in any area.*

*The wide bright corridors, with the strongly coloured areas, help her find her way around, and clearly define her location.*

*She related how the dark coloured doors make it so much easier for her to see them as they in such stark contrast to the white/light coloured walls. The glass panels help her to feel and see the door ways and help her located the handles.*

*She also indicated that the brightly coloured chairs in each room help her to identify the location of the tables and seating in the rooms easily.*

*But that the best thing was that due to the large windows, skylights and quality of the lighting system and natural daylight in so many rooms make it so much easier for her to see beyond the shadows and help her every day.*

*We were really humbled, as I don't think we had realised quite how much this girl's vision is impaired, and the difference that the design and colours make to her every day life in the school. She is an amazing girl and never complains nor looks for exceptional treatment, and she stated that her life every day in our school is made so much better by all of the things mentioned above.*

*I wanted you to hear this, as you continue to design, plan and develop new schools. Your care and attention to detail in doing this has made a huge difference to Lucy, and will continue to do so for so many others. If you would keep this in mind with future builds it would be great. If you would like to meet or talk with Lucy about her experience with the design of our school I'm sure she would do so and if you would like us to get further feedback we can do.*

*Kind regards,*



# SUPPORTING STUDENTS WITH AUTISM AND COMPLEX NEEDS

**Ensuring provision of education for students with autism and complex learning needs is a vital goal of LMETB and the Land and Buildings Department.**

In December 2023, the Department of Education granted Patronage of a new Community Special School in Co. Meath to LMETB.

Cara Community Special School, Enfield, Co. Meath is a Community Special School that provides an appropriate education for students, aged 4 to 18 years old, who have a diagnosis of Autism and complex learning needs, with a professional recommendation for a Special School.

The school operates within the regulations as outlined by the Rules for National Schools and relevant circulars and directives issued by the Primary/Special Education sections of the Department of Education. The school is funded by grants from the Department of Education. Staffing allocations are in line with those set out by the Department of Education. Under the direction of the Patron, the school will be managed on an interim basis by a Single Manager pending the appointment of a Board of Management.

The Board of Management once appointed will be made up of representatives of the Patron, parents, school staff and the community.

Cara Community Special School, Enfield, Co. Meath delivers the curriculum as prescribed by the Department of Education and adapted to meet the educational needs of each student. A variety of methodologies and strategies are adopted to maximise the students' learning potential. Supported by the child's multidisciplinary team, the teachers and staff provide a caring and challenging learning environment which fosters personal, social and academic development. All students have an Individual Educational Plan designed specifically for them.

Cara Community Special School is a place where everyone feels a sense of belonging and ownership. The school is characterised by respectful and positive relationships which support the dignity of every individual. LMETB are committed to ensuring a safe environment where our students can maximise their potential.

Forging meaningful relationships with the students, their parent(s)/guardian(s) and all involved in their care and education, is essential to ensuring a quality educational experience for our learners.

**“The school is characterised by respectful and positive relationships which support the dignity of every individual.”**



Fiona Kindlon,  
Director of  
Schools



The development of a State of the Art School building for Cara Community Special School will be a focus for the Land and Buildings team at LMETB.

Currently, the Land and Buildings team and Director of Schools Ms. Fiona Kindlon are liaising with the Department of Education regarding the modification of existing temporary accommodation for Cara Community Special School which will open in the 2024/2025 academic year.

The accommodation provided for the pupils and staff at the school will include the following:

- Spacious Teaching and Learning Spaces (4 Classrooms)
- Daily Living Skills area
- Central Activities Space
- Multi-sensory rooms
- Quiet spaces in each Classroom
- Occupational Therapy room (OT)
- Meeting room
- Soft Play area
- Hard Play area
- Staffroom
- Administration Office

Additional modifications will take place for the 2025/2026 academic year at the Enfield site with a decision on the long-term location of the school to be confirmed by the Department of Education.





LMETB are delighted to confirm that in addition to the opening of Cara Community Special School which will provide education for 18 pupils and students with Autism and Complex Learning needs, LMETB will also have expanded provision in our Special Classes for students with Autism across LMETB Schools and Colleges. With a total of five new Special Classes opening, 2 at primary level and 3 at post primary level catering for 30 students bringing to 36 the total number of Special Classes in the 2024/2025 academic year across counties Louth and Meath providing an appropriate education for 216 students.

One of the key aspects of constructing schools and classes for students with Additional Educational Needs is creating accessible and adaptive learning environments. These elements help create an inclusive atmosphere where all students can learn comfortably and effectively.

These schools are designed to provide tailored educational experiences, ensuring that students receive the support they need to thrive academically, socially, and emotionally and progress to the next step in their education. Features such as sensory rooms and specialised classrooms equipped with assistive technologies are essential.

LMETB continues to work closely with all partners to develop permanent buildings for the provision of education for these young people. The following provides an overview of Special School or Special Class permanent accommodation delivered, in progress and due to commence shortly in LMETB Schools and in non LMETB Schools being supported by the Land and Buildings Department.

**SEN Projects completed in 2023 and at various design stages**

LMETB schools		
Ard Rí CNS, Navan	4 classes	24 students
Ashbourne CNS	4 classes	24 students
Beaufort College, Navan	4 classes	24 students
Bush Post Primary School	2 classes	12 students
Coláiste na Mí, Navan	2 classes	12 students
Coláiste Ríoga, Dunshaughlin	4 classes	24 students
Dunshaughlin Community College	6 classes	36 students
Dunshaughlin CNS	2 classes	12 students
Enfield Community College	4 classes	24 students
O'Carolan College, Nobber	4 classes	24 students
St. Oliver Community College	4 classes	24 students
St. Peter's College, Dunboyne	4 classes	24 students

Non-ETB Schools		
Skerries ETNS	4 classes	24 students
St. Ciaran's CS, Kells	2 classes	12 students
St. Francis NS, Blackrock	5 classes	30 students
St. Mary's National School, Enfield	3 classes	18 students
St. Mary's Special School, Navan	4 classes	84 students
St. Michael's Loreto, Navan	2 classes	12 students
St. Peter's NS, Dunboyne	2 classes	12 students
St. Ultan's Special School, Navan	20 classes	120 students





# CROSS BORDER SCHOOLS PATHWAYS PROGRAMME

## Presentation to Special Envoy Joe Kennedy, Advanced Manufacturing Pathways Schools Project - a cross border collaboration - International fund for Ireland.

In April Special Envoy to Northern Ireland Joe Kennedy attended an event in Portview Trade Centre, Belfast which celebrated the achievements of young people from 4 schools in Belfast who participated in a cross-border Advanced Manufacturing Schools Pathways Programme in Partnership with 4 schools from LMETB.

The Advanced Manufacturing Pathways School's Project is an exciting undertaking that works to empower students with the skills, knowledge, and competencies needed to thrive in an increasingly interconnected world. The programme provides an opportunity for young people to gain experience in Advanced Manufacturing and inspires them to develop and utilise new skills and knowledge which supports a creative and innovative approach to cross-community Cross Border Peacebuilding.

Students have access to State of the Art facilities in both the AMTCE Dundalk and AMIC Queens University Belfast, which introduced participating young people to Design Thinking, Additive Manufacturing, Robotics, Automation, Industry 4.0, Cybersecurity, and 3D printing. The programme aims include supporting young people to see new and exciting personal and career opportunities, which ultimately will support the development of necessary skills and talent pipelines to support social and economic prosperity and growth.

Joe Kennedy, Special Envoy to Northern Ireland, heard directly from students and teachers about their experiences, and the value such an opportunity affords in providing an awareness and knowledge for future learning and career choices. He expressed an appreciation to the International Fund for Ireland for providing this wonderful opportunity which combines advanced manufacturing, technologies with this innovative and transformative educational and Peacebuilding experience.



# SPORTING APPLICATIONS

## Application for a new Sports Arena at St. Oliver's Community College under the Large Scale Sporting Infrastructure Fund.

LMETB and Drogheda Wolves Basketball Club applied for a new Sports Arena for Drogheda in July. The estimated project costs is €12.7million with match funding being provided by the Department of Education. This major sporting facility located on the grounds of St. Oliver's Community College will neatly serve the physical education needs of students in attendance at St. Oliver's and will provide a much-needed basketball arena for Drogheda Wolves.

The project has received a priority one ranking by both Louth County Council and Special Olympics Ireland. LMETB are pleased that the plans submitted provide for changing places changing rooms which is much needed for a facility of this nature.

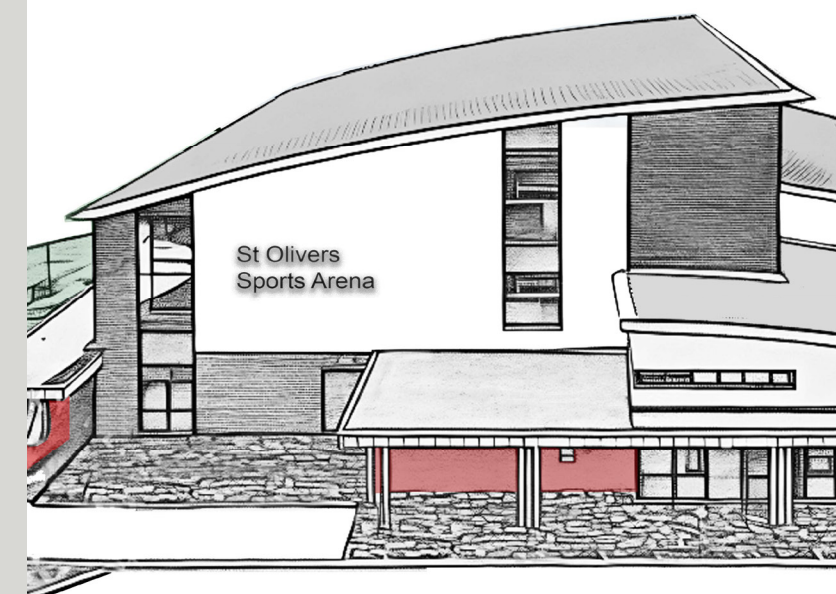
The planned arena 2,158m<sup>2</sup> will accommodate three full size basketball courts arranged in a versatile layout. Stored away tiered seating will enable hundreds of spectators to watch showcase events. The application supports LMETB's Estates Strategy and Use of Facilities policy where all LMETB facilities are made available to the wider community.

The development of the overall application/business case was overseen by the Land and Buildings Department in consultation with Drogheda Wolves, locally elected representatives, school management and our Design Team Consultants.



## Sports Capital Programme Application - Upgrade of track and 2 lane extension.

Bush Post Primary School is the only LMETB school that has an Olympic standard 6 lane athletics track. In partnership with Glenmore Athletic Club an application to extend the track to 8 lanes and resurface the existing lanes was submitted under the last round of Sports Capital Programme applications. We await the outcome.





# CLIMATE AND SUSTAINABILITY



Positive participation and embracing climate action and sustainability is a key cross cutting theme in LMETB teaching, learning and skills development to promote a new way of living and working that protects our planet. LMETB are working

closely with the Sustainable Energy Authority of Ireland, our Energy Efficient Designer and Energy Team to develop and implement a new more sustainable and climate friendly plan for all our schools and FET communities across Louth and Meath.

## Energy in Education Staff Training

LMETB with the support of SEAI developed bespoke Energy in Education training sessions which were delivered to 70 school principals, assistant principals, and school energy teams. Emphasising the collective responsibility of schools in tackling energy-related challenges while maintaining educational excellence, two training sessions were held, one in September and followed up in November 2023.

Each day featured training and interactive sessions allowing the sharing of knowledge and experience across the LMETB region. The training equipped the participants with essential knowledge and strategies to help schools reduce energy emissions and costs while also protecting the environment. Bespoke energy management action plans were created by the participants.

The collaborative spirit was palpable as educators discussed best practices and innovative solutions, and on completion, each school left with a customised action plan and awareness campaign.



## Climate Action Roadmap

Under the Climate Action Mandate as part of CAP23 (Climate Action Plan 2023), LMETB prepared a Climate Action Roadmap to report on progress towards achieving the decarbonisation and energy efficiency targets set out in CAP23.

Our first Climate Action Roadmap builds on several initiatives participated in by our schools, further education and training centres and administration buildings over the years. The Climate Action Roadmap outlines our plans to reduce our environmental impact, to increase awareness and knowledge and to minimise our environmental impact across all our service delivery.

Our Estates Strategy is a key part of our overall plan and future investment in buildings will be greatly influenced by a move to carbon-neutral. In addressing the Public Sector Mandate and through our sustainability strategy we will reach our sustainability targets. Service delivery will be underpinned by a whole ETB approach to sustainability, where all our stakeholders will be encouraged and required to become more responsible and informed as we transition to carbon-neutral.



## Reduce Your Use Campaign 2023

Delivered by the SEAI and the OPW and implemented by LMETB, the Reduce Your Use energy efficiency initiative provided a structured programme of energy saving activities undertaken during the winter months of 2022/2023. The Reduce Your Use Campaign focused on taking action in the short term and implementing measures to set LMETB on a pathway towards achieving our 2030 energy efficiency and decarbonisation targets. LMETB promoted energy saving awareness to staff and students through the Reduce your Use Campaign. This required buy in from all senior management, staff and student to be mindful of energy usage.

The Reduce Your Use Campaign assisted staff and students with monitoring consumption, identifying opportunities for improvement, make meaningful and measurable changes, and learning from the effectiveness of these interventions. This was a successful campaign with positive participation from staff and students.







## **ESTATES MANAGEMENT**





# ESTATES MANAGEMENT

LMETB's Land and Buildings Department has responsibility for all property and land matters including the acquisition of lands, lease/licencing of land and/or buildings, use of facilities and all matters in relation to the LMETB estate. LMETB's Estate Strategy aligns estate management with broader organisational goals, helps enhance operational efficiency, cost-effectiveness, and the overall sustainability of our portfolio of assets. With a stock of 25 owned, 12 managed, 25 leased and 25 licences buildings the benefit of the strategy is that it involves comprehensive planning to ensure that the use of estates aligns with the strategic goals of LMETB and ensures funding is put to the best use.

Key components include space planning, which aims to maximise the use of available space, and sustainability initiatives, focusing on reducing the environmental impact of buildings through energy efficiency and waste reduction.



Strategic development often involves long-term planning for new construction, renovations, or disposals of properties to better meet organisational needs. This might include leveraging technology for smart building management, enhancing security, and improving occupant comfort.

Financial planning is also critical, as it involves budgeting for maintenance, operations, and capital projects while ensuring a return on investment.

# CAPITAL PROCUREMENT

Maximising delivery of all capital projects is a key priority for LMETB in which procurement plays a critical role. The Land and Buildings Department has responsibility for all capital procurements within LMETB. This consists of tendering for all professional consultants and contractors in accordance with the National Public Procurement Policy Framework which consists of the Legislation (Directives, Regulations), Policy (Circulars etc.), Capital Works Management Framework, General Procurement Guidelines, more detailed technical guidelines, templates, documents and notes issued periodically by the Policy Unit of the Office of Government Procurement (OGP).

Additionally, all tender and contracting processes are carried out in accordance with the Department of Education Design Team Procedures and associated Practice Notes, Technical Guidance Documents (TGDs) where applicable, Conditions of Engagements, Form of Tender documents and accompanying guidance.

LMETB have procured an Energy Efficient Design Expert and will draw off the current winning tender contract for necessary professional technical services, as outlined in IS 399, the systematic approach to the design, construction, and commissioning of new projects to minimise energy consumption in their operational lifecycle.

The smaller repair and maintenance projects are equally important to the upkeep of the buildings under LMETB remit. In order to ensure compliance with procurement on smaller repair and maintenance type works all schools and centres under its remit must use the General Construction & Maintenance Framework, a framework of competent Contractors and specialists per county.



It should be noted that LMETB is underpinned by the statutory provision ETB Act 2013 and the Code of Practice for the governance of ETBs 0002/2019.

LMETB has been subject to the Financial Management Maturity Model of audit by C&AG and confirms governance and compliance is at a very high level. This affirmation and confirmation of LMETB together with reports provided by IAU following the recent audit on capital projects underscores LMETB's capacity and governance to deliver on their capital portfolio of projects.

The Board of LMETB established a Land and Buildings Sub Committee in accordance with the provisions of Section 44 (1) b of the Education and Training Boards Act 2013 to advise in relation to the performance by it of its functions under.

The Land and Buildings Department report to the committee in advance of the main Board meetings.



Purchase of AMTCE building



## SHARING OUR SCHOOL FACILITIES

Sharing our school facilities with the community is at the heart of LMETB's mission. By opening our doors it provides numerous benefits. It maximises the use of public resources, offering spaces for sports, arts, and social events outside school hours and places our schools at the heart of their community.

Fostering community engagement and strengthening ties between the school and local residents is key. Access to school facilities can support local organisations, promote healthy lifestyles through recreational activities, and provide venues for adult education and community programs.

Additionally, it enhances security and upkeep of the premises, as increased usage deters vandalism and neglect. Overall, it creates a vibrant, inclusive environment that benefits both the school and the broader community.

A prime example is our Coláiste Chu Chulainn 2nd level school in Dundalk.

Coláiste Chu Chulainn is home to the Cross Border Orchestra of Ireland where student members of the orchestra travel from all over Ireland to Dundalk each Sunday for rehearsal. The Peace Proms Concerts are vibrant musical events organised by the Cross Border Orchestra of Ireland. These concerts bring together thousands of young musicians and singers from diverse backgrounds to promote peace, unity, and cultural understanding through music.

Held across various locations, Peace Proms feature a mix of classical, contemporary, and traditional music, creating an inspiring and inclusive atmosphere. The concerts not only showcase young talent but also emphasize the importance of harmony and cooperation. By participating, students gain invaluable performance experience, while audiences enjoy uplifting performances that highlight the power of music to bridge divides and foster peace. Without the support of Coláiste Chu Chulainn and LMETB the Orchestra would not be in a position to offer this amazing opportunity to so many young people. LMETB are pleased to support the CBOI and the good work they do on building relationships and peace on the island of Ireland.



Belfast Peace Proms 2024



CBOI Rehearsals at Coláiste Chu Chulainn, Dundalk



# RATOATH COLLEGE OFFICIAL OPENING – SEPTEMBER 2023





# CURRENT BUILDING PROJECTS

The table below gives an overview and update of the active major building projects currently being managed by LMETB’s Land and Buildings Department.

School/Centre	Project	Status	Funding Body
Abbey Road, Further Education Campus, Navan, Co. Meath	Upgrade of Building for Further Education Services including deep retrofit	Decision Gate 1	SOLAS/DFHERIS
Administrative Offices/FE Chapel Street, Dundalk, Co. Louth	Emergency Works - Roof Replacement Project	Decision Gate 2	SOLAS/DFHERIS
Administrative Offices/FE Chapel Street, Dundalk, Co. Louth	Emergency Works - Boiler Replacement Project	Decision Gate 1	SOLAS/DFHERIS
Advanced Manufacturing Training Centre of Excellence, Dundalk, Co. Louth	Conversion of Facility to Advanced Manufacturing	Stage 5	SOLAS/DFHERIS
Ard Rí Community National School & St. Ultan’s Special School, Navan, Co. Meath (Campus)	New 16 classroom school and new 20 classroom special school for St. Ultan’s Special School, Navan	Stage 2b	Department of Education
Ashbourne Community National School, Ashbourne, Co. Meath (DoE Led)	New 16 classroom school + 4 SEN classes	Stage 5	Department of Education
Beaufort College, Navan, Co. Meath	Permanent Extension including Special Needs Unit	Stage 2b	Department of Education
Beaufort College, Navan, Co. Meath	Modular Accommodation for September 2023	Stage 5	Department of Education
Bush Post Primary School, Riverstown, Dundalk, Co. Louth	Major Devolved Permanent Extension	Stage 4	Department of Education
Coláiste de Lacy, Ashbourne, Co. Meath (DoE Led)	Major Permanent Extension	Stage 2b	Department of Education
Coláiste Pobail, Ráth Chairn, Co. Meath	Summer Works Project - Upgrade Works	Stage 1	Department of Education
Coláiste Ríoga, Dunshaughlin, Co. Meath	New 1,000 pupil school	Stage 2b	Department of Education
Coláiste na hInse, Laytown, Co. Meath	Permanent Extension	Stage 2b	Department of Education
Coláiste na Mí & St. Mary’s Special School, Navan, Co. Meath (Johnstown School Campus)	Major Permanent Extension for Coláiste na Mí and new school for St. Mary’s Special School	Stage 4	Department of Education
Drogheda Electrical Apprenticeship Training Centre, Co. Louth	Modifications to Building	Stage 5	SOLAS/DFHERIS
Drogheda Institute of Further Education, Drogheda, Co. Louth	SIUF (Strategic Infrastructure Upgrade Fund) - New Multi Tertiary Extension and Changing Rooms	Decision Gate 1	SOLAS/DFHERIS
Dunboyne College of Further Education, Dunboyne, Co. Meath	New Dunboyne College of the Future	Decision Gate 0	SOLAS/DFHERIS
Dunshaughlin Community College, Dunshaughlin, Co. Meath	Major Devolved Permanent Extension	Stage 2a	Department of Education
Dunshaughlin Community National School, Dunshaughlin, Co. Meath (DoE Led)	New 8 classroom school	Stage 2b	Department of Education
Enfield Community College, Enfield, Co. Meath (DoE Led)	New 1,000 pupil school	Stage 3	Department of Education
Faughart Community National School, Dundalk, Co. Louth	Temporary Accommodation	Stage 1	Department of Education
New LMETB HQ, Drogheda, Co. Louth	Major Devolved New Headquarters Building	Stage 2b	Department of Education

School/Centre	Project	Status	Funding Body
O’Carolan College, Nobber, Co. Meath	Major Devolved New School Building	Stage 4	Department of Education
Ó’Fiaich College, Dundalk, Co. Louth	Summer Works Project	Stage 5	Department of Education
Regional Skills and Training Centre, Dundalk, Co. Louth	Emergency Works - Boiler Replacement Project	Stage 5	SOLAS/DFHERIS
St. Oliver Post Primary School, Oldcastle	Permanent Extension	Stage 1	Department of Education
St. Oliver’s Community College, Drogheda, Co. Louth	Modular Accommodation for September 2023	Stage 5	Department of Education
St. Oliver’s Community College, Drogheda, Co. Louth	Major Devolved Permanent Extension	Stage 1	Department of Education
St. Peter’s College, Dunboyne, Co. Meath	New Permanent Special Needs Unit	Stage 5	Department of Education
St. Peter’s College, Dunboyne, Co. Meath	Emergency Works - Life Safety Systems	Stage 4	Department of Education

## Building Projects devolved to LMETB to support other Patrons

School/Centre	Project	Status	Funding Body
Loreto Secondary School, Navan, Co. Meath	Major Permanent Extension	Stage 2b	Department of Education
Loreto Secondary School, Navan, Co. Meath	Modular Accommodation for 2023	Stage 4	Department of Education
Skerries Educate Together National School, Skerries, Co. Dublin	New Permanent 4 class Special Needs Unit	Stage 3	Department of Education
St. Ciaráns Community School, Kells, Co. Meath	Major Permanent Extension	Stage 2b	Department of Education
St. Ciaráns Community School, Kells, Co. Meath	Modular Accommodation	Stage 5	Department of Education
St. Francis National School, Dundalk, Co. Louth	Major Permanent Extension	Stage 2a	Department of Education
St. Mary’s National School, Enfield, Co. Meath	New Permanent 3 class Special Needs Unit	Stage 5	Department of Education
St. Mary’s Special School, Navan, Co. Meath	New 14 classroom Special School	Stage 4	Department of Education
St. Peter’s National School, Dunboyne, Co. Meath	Major Devolved - Construction of 5 class School and Special Needs Unit	Stage 4	Department of Education
St. Ultan’s Special School, Navan, Co. Meath	New 20 classroom Special School	Stage 2b	Department of Education





## THE FUTURE IS HERE

**AMTCE**  
 Ionad Ollúna  
 Barr Feabhais  
 Ard-Déantúsálochta  
 Advanced  
 Manufacturing Training  
 Centre of Excellence

LMETB is at the forefront of integrating cutting-edge technology into education and training, significantly advancing its capabilities across various domains.

One notable area is cybersecurity training, where LMETB has developed comprehensive programs to equip students and companies with essential skills to protect against cyber threats, addressing a growing need for security professionals in the digital age.

In robotics we have incorporated advanced systems like Spot the Dog, a dynamic robot from Boston Dynamics, into relevant curricula. Spot is used for practical training in robotics and automation, providing hands-on experience with real-world applications in industries such as construction, healthcare, and public safety.

Furthermore, LMETB has embraced advanced robotics and automation, preparing students for the future workforce by offering courses that cover the operation and programming of sophisticated robotic systems. This practical exposure ensures that learners are well-versed in the latest technological advancements.

Another remarkable initiative is the introduction of 3D concrete printing technology in our training programs. This innovative approach allows for the creation of complex concrete structures through automated processes, revolutionizing the construction industry. By integrating these technologies, LMETB is not only enhancing educational experiences but also ensuring that its students are prepared for the evolving demands of the modern workforce.





# ICE AWARDS

## Land and Buildings recently received affirmation of best design

LMETB has achieved notable success in the Irish Construction Excellence (ICE) Awards, highlighting its commitment to excellence in educational infrastructure. The ICE Awards recognize outstanding achievements in construction and project delivery. LMETB's projects have been celebrated for their innovative design, quality, and sustainability.

This recognition underscores LMETB's dedication to creating State of the Art educational environments that enhance learning experiences. The awards reflect the Board's ability to effectively manage and execute complex projects, ensuring they meet the highest standards. LMETB's success at the ICE Awards showcases its leadership in advancing educational infrastructure in Ireland.



In 2023 Phase I of our Advanced Manufacturing Centre of Excellence, Dundalk won the Fit out or Refurbishment Category under €5million (C.J Callan Contracts Ltd) and this year our new Drogheda College Electrical Apprenticeship Centre won in the up to €10million category. (DSCCS Ltd).



### 2023 Awards

Colin Callan (CJ Callan Construction Ltd), Sinéad Murphy, (LMETB), Colm McGrath (Surety Bonds Part of Howden, ICE Awards Sponsor), Martin O'Brien (LMETB), Kevin Callan (C.J. Callan Construction Ltd), Mark Reilly (CJ Callan Construction Ltd) and Deirdre O'Kane



### 2024 Awards

Derek McAuley (DK Property Services), Sinéad Murphy (LMETB), Colm McGrath (Surety Bonds Part of Howden, ICE Awards Sponsor), Declan Sharkey (DSCCS Ltd), Martin O'Brien (LMETB), Stephen Oppermann (Oppermann Associates) and Deirdre O'Kane



# ACKNOWLEDGEMENTS

## ARCHITECTURAL DESIGNS

- Coady Architects
- Hamilton Young Architects
- Keys and Monaghan Architects
- MCOH Architects
- Oppermann Associates
- Reddy Architecture & Urbanism
- Van Dijk Architects
- Wejchert Architects

## PHOTOGRAPHY

- DK Property Services
- Patrick Murtagh Photography

We would be delighted to provide you with more information on any of the projects within or to schedule a viewing of our centres.

Please feel free to contact Sinéad at **086 603 4313** or **smurphy@lmetb.ie**

This publication is printed on FSC certified paper and is carbon balanced. All papers are recyclable, biodegradable and compostable.



Advanced Manufacturing Training  
Centre of Excellence, Dundalk





***lmetb***

*Bord Oideachais agus  
Oiliúna Lú agus na Mí*  
Louth and Meath Education  
and Training Board

**Head Office Dundalk**  
LMETB Administrative  
Offices, Chapel Street,  
Dundalk, Co Louth,  
A91 C7D8

**T:** 042 933 4047  
**E:** [education@lmetb.ie](mailto:education@lmetb.ie)

**Head Office Navan**  
LMETB Administrative  
Offices, Abbey Road,  
Navan, Co Meath,  
C15 N67E

**T:** 046 906 8200  
**E:** [education@lmetb.ie](mailto:education@lmetb.ie)

